

Lokotrack® ST3.8™ & ST3.8E

Precise screening with high capacity

ST3.8™ is a versatile mobile screen for high capacity aggregates production in quarries or construction sites. It is safe and easy to use and fine-tune to match your operational requirements. The machine is transported as one unit, thanks to hydraulic folding of its conveyors.

10 m side conveyors

- Suspended rollers
- Easier angle adjustment*

Cost-efficient screening capacity

- Interchangeable screen meshes
- Various screening media

Roll-back prevention gates*

Tipping/Vibrating grid

for separating oversize
Tigging grid with rods*

Areas of application:



Recycled waste



Railway ballast



Road base



Fine aggregates

Safe by design

Handrails, platforms and lights

Diverter chute

Produce mixed products

Fuel efficient Engine

CAT® Diesel-Electric drive
with e-Power *

Easy maintenance access

- Hydraulic screen lift
- Large area under screen



Metso IC automation

Easy and safe process control and
connectivity to other Lokotrack

*Available as an option



Easy fine-tuning to match your
operational requirements



Quick adaptation with
interchangeable screen meshes








Compact size for transport
in a standard trailer



Diesel-electric drive
with e-Power

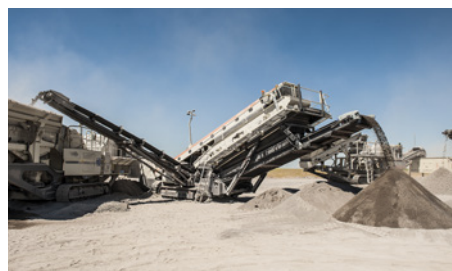
Technical details Lokotrack® ST3.8™ & ST3.8E

Screen	Feeder	Conveyor	Engine power options	Transport dimensions
				
<p>Size 5,480 x 1,520 mm (18' x 5')</p> <p>Screening area 8.4 m² (10 yd²)</p> <p>Decks 2</p> <p>Nominal capacity* 500 MtpH (550 Stph)</p> <p>Stroke 7-8 mm</p> <p>Screening media Woven steel mesh</p>	<p>Type Belt feeder with tipping/ vibrating grid or rock box</p> <p>Hopper volume 7.5 m³ (9.6 yd³)</p> <p>Loading height 2,315 mm (7' 7") 3,390 mm (11' 1") (with tipping grid)</p> <p>Loading width 4,650 mm (15' 4")</p> <p>Max feed size 150 mm (6")</p>	<p>Lifting conveyor width 1,050 mm (42")</p> <p>Side conveyor top deck* width 800 mm (31,5") length 10 m (32' 10")</p> <p>Side conveyor bottom deck* width 800 mm (31,5") length 10 m (32' 10")</p> <p>Product conveyor undersize width 1,200 mm (47")</p> <p>*Adjustable discharge height</p>	<p>Model CAT® C3.6</p> <p>StageV/Tier4F 100 kW (134 hp)</p> <p>Tier3 106 kW (142 hp)</p> <p>Fuel tank 300 l (79 gal)</p> <p>Hydraulic oil 105 l (28 gal)</p> <p>*Available as an option</p>	<p>Length 18,000 mm (59' 1")</p> <p>Width 3,000 mm (9' 10")</p> <p>Height 3,330 mm (10' 11")</p> <p>Weight 30,000 kg (66,100 lbs)</p>

*Capacity depends on application (required end products, feed material characteristics and size, moisture etc.).



Multiple options for feeding.



Interchangeable screen meshes.



Easy access to the service locations.



Safety by design.



"Because every bit of material we have to move or crush will be used on the site, we looked at all the competitor mobile plants with Chris. Because we knew what needed to be done, we both agreed we needed the best. We wanted Metso Lokotracks,"
McDonald, Highways, Inc., Tennessee, USA